

WETLAND LOCATION AND DELINEATION
PERFORMED BY BULLARD LAND PLANNING, INC.

SURVEY REFERENCES:
ALISHA INVESTMENTS, INC.
ADAM LEE LAND SURVEYS
5580 GA HWY 20 S.W. 30052 (770) 554-8995
REVISION 5.3.09

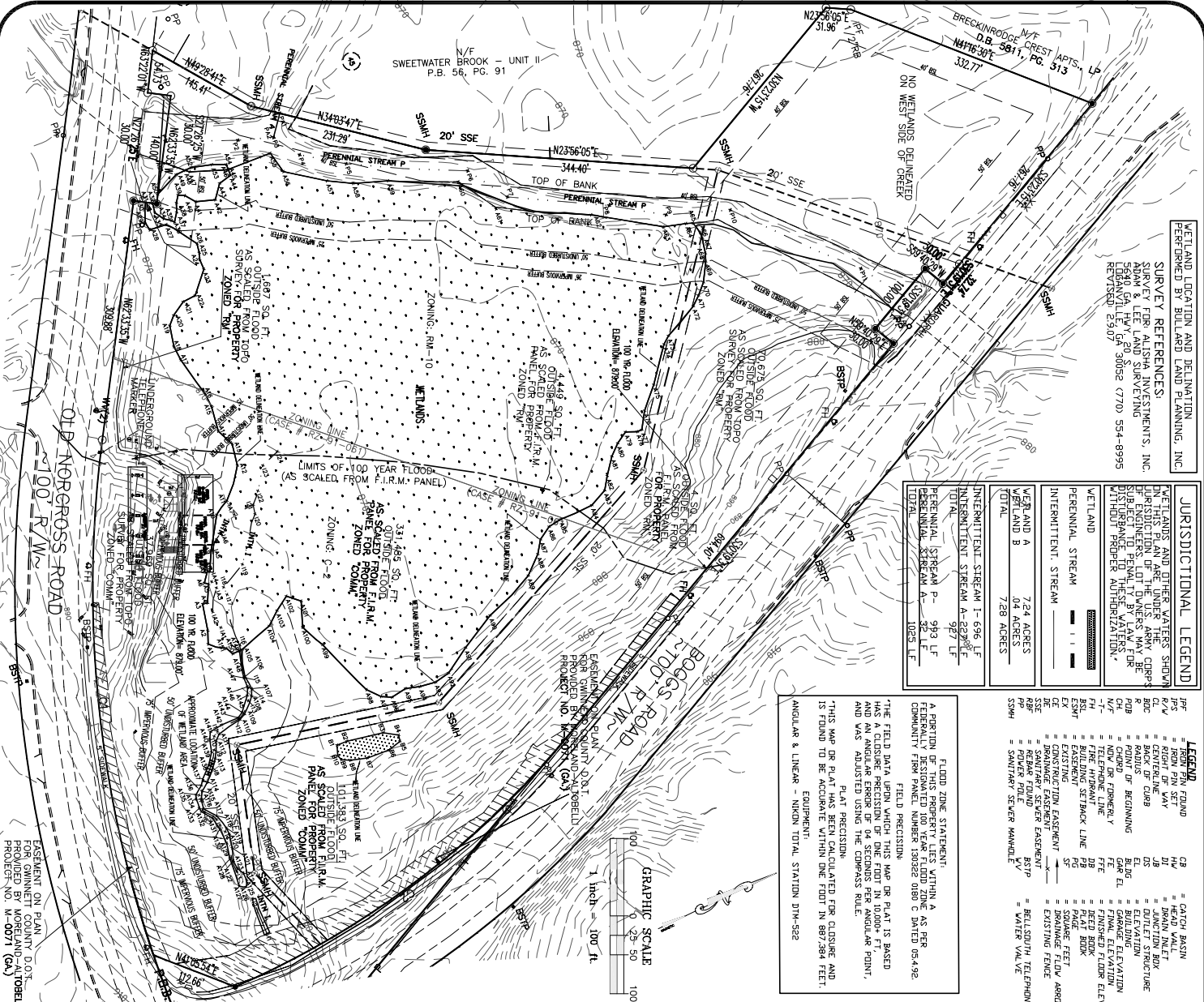
JURISDICTIONAL LEGEND

WETLANDS AND OTHER WATERS SHOWN ON THIS PLAN ARE UNDER THE CARE AND CONTROL OF THE STATE OF GEORGIA AS ENGINEERS LOT 1000'S MAY BE SUBJECT TO PENALTY BY LAW FOR VIOLATION OF PROPER AUTHORITY.
WETLAND
PERENNIAL STREAM
INTERMITTENT STREAM
WETLAND A 7.24 ACRES
WETLAND B 0.4 ACRES
INTERMITTENT STREAM A-6299 LF DUAL
PERENNIAL STREAM P- 993 LF
PERENNIAL STREAM A- 32.1 LE DUAL

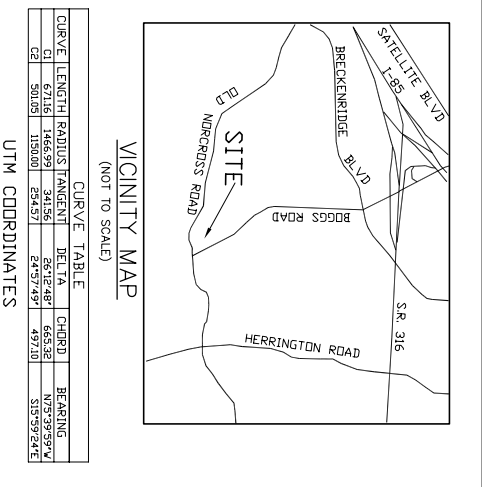
LEGEND

FF	IRON PIN FOUND	CB	CATCH BASIN
RFV	RIGHT OF WAY	BI	BRAIN INLET
CL	CENTERLINE	JB	JUNCTION BOX
RD	ROAD	EL	ELEVATION
POB	POINT OF BEGINNING	FE	FINISHED ELEVATION
MP	MANHOLE	FF	FINISHED FLOOR ELEVATION
HT	HYDRANT	BB	BEED BOX
EX	EXISTING	PA	PAVE
ESW	EXISTING SIDEWALK	ST	SOARE FEEDWAY
SE	SEWER	PF	PERFORATED PIPE
SS	SEWER SERVICE EASTMENT	STP	STATION TELEPHONE
SSS	SEWER SERVICE EASTMENT	WV	WATER VALVE
PP	PUMP		
PP	PUMP		
SWH	SAWTRAY SEWER MANHOLE		

A PORTION OF THIS PROPERTY LIES WITHIN A FLOOD ZONE AS SHOWN ON THE FLOOD ZONE MAP OF THE COUNTY OF GWINNETT, GEORGIA. THE FLOOD ZONE MAP IS A GENERALIZATION OF THE FLOOD ZONE AS SHOWN ON THE FLOOD ZONE MAP OF THE COUNTY OF GWINNETT, GEORGIA. THE FLOOD ZONE MAP IS A GENERALIZATION OF THE FLOOD ZONE AS SHOWN ON THE FLOOD ZONE MAP OF THE COUNTY OF GWINNETT, GEORGIA. THE FLOOD ZONE MAP IS A GENERALIZATION OF THE FLOOD ZONE AS SHOWN ON THE FLOOD ZONE MAP OF THE COUNTY OF GWINNETT, GEORGIA.



WET A	WET B	WET C	WET D	WET E	WET F	WET G	WET H	WET I	WET J	WET K	WET L	WET M	WET N	WET O	WET P	WET Q	WET R	WET S	WET T	WET U	WET V	WET W	WET X	WET Y	WET Z
143791488	143791489	143791490	143791491	143791492	143791493	143791494	143791495	143791496	143791497	143791498	143791499	143791500	143791501	143791502	143791503	143791504	143791505	143791506	143791507	143791508	143791509	143791510	143791511	143791512	143791513
231911527	231911528	231911529	231911530	231911531	231911532	231911533	231911534	231911535	231911536	231911537	231911538	231911539	231911540	231911541	231911542	231911543	231911544	231911545	231911546	231911547	231911548	231911549	231911550	231911551	231911552
143791488	143791489	143791490	143791491	143791492	143791493	143791494	143791495	143791496	143791497	143791498	143791499	143791500	143791501	143791502	143791503	143791504	143791505	143791506	143791507	143791508	143791509	143791510	143791511	143791512	143791513
231911527	231911528	231911529	231911530	231911531	231911532	231911533	231911534	231911535	231911536	231911537	231911538	231911539	231911540	231911541	231911542	231911543	231911544	231911545	231911546	231911547	231911548	231911549	231911550	231911551	231911552



CURVE TABLE

CURVE	LENGTH	RADIUS	TANGENT	DELTA	CHORD	BEARING
CI	67116	146629	34156	2612.48°	66532	N75.7329°E
CE	50105	115000	23457	24.57.49°	49710	S15.9224°E

JURISDICTIONAL AREA LOCATION MAP

PREPARED BY:
BULLARD LAND PLANNING
7764-A HAMPTON PLACE
LOGANVILLE, GEORGIA 30052
PHONE: (770) 554-8714 ~ FAX: (770) 554-8715

SCALE AS SHOWN

FIELD DATE: 12.10.08

DRAWN BY: J. MOON

JOB# 08-1502

SHEET # 1 OF 2

WETLANDS SURVEY FOR:
ALISHA INVESTMENTS, INC.

LOCATED IN LAND LOT 40
OF THE 7TH DISTRICT
GWINNETT CO. GEORGIA
JANUARY 7, 2009

REVISIONS:

DATE	DESCRIPTION

